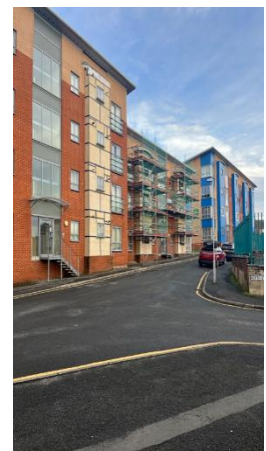
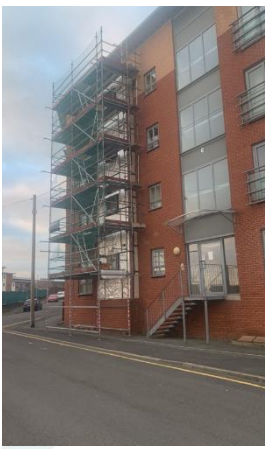


Statement from Courtney Greatorex - Resident Liaison Officer at Bedford and Leicester Courts - Moor Lane & Cregg Lane, Preston

We are pleased to inform you that Starfish Construction has been appointed by **Miller Homes** to carry out the works at **Bedford and Leicester Courts**. Please find below the latest updates regarding the **cladding Remediation works and onsite activities at Leicester Courts**, commenced from **Monday 15th December 2025**:



Leicester Court

We are pleased to share that excellent progress is being made ahead of the Christmas break period, with the team continuing to hit key milestones across the site.

Planned Works for this week as follows:

- **EPDM installation** is underway to windows on elevations **D1 and D2**.
- **Obex membrane and tape installation** is progressing steadily.
- **Metal brackets** are being fixed across all elevations.
- Works are being carried out safely and efficiently from the **scaffolded areas** and via the **scissor lift** where required.

We would like to sincerely thank all residents for their patience and cooperation during this busy period. Your support is greatly appreciated as we continue to deliver these important works.



Gas Checks

Dear Residents and Leaseholders,

We are pleased to confirm that **all scheduled gas safety checks have now been successfully completed until after the Christmas period.**

We would like to extend our sincere thanks to all residents, leaseholders, and our dedicated site team for working together to make this process smooth and efficient. Your cooperation has been invaluable in facilitating access and ensuring that the inspections progressed without delay.

Thanks to this collective effort, the gas checks were completed ahead of schedule, allowing the wider site works to continue progressing strongly as we move into the festive break.

We greatly appreciate your patience and support throughout this period and look forward to continuing the works in the New Year.

Kind regards,

Courtney Greatorex Resident Liaison Officer



Christmas Message and Shutdown Dates – Moor Lane



Holiday Countdown Begins!



Dear Residents,

As we approach the festive season, the team at Starfish Construction would like to extend our heartfelt thanks for your patience, understanding, and ongoing support throughout the Façade Remediation Project at [Project Name]. Your cooperation has been invaluable in helping us progress smoothly and safely on-site.

Please note that our site will be closed for the Christmas break from [Insert Shutdown Start Date] to [Insert Shutdown End Date]. During this time, no construction activities will take place, and our team will return to work on [Insert Return Date].

If during this period you notice any activity around the site, please call our emergency operations line at **0333 016 5399**. If you suspect criminal activity or an injury, please contact the emergency services on **999**.

We wish you a joyful Christmas and a happy New Year.

Best regards,

The Starfish Construction Team

Christmas and New Year Shutdown for 2025/26

0333 016 5399

In case of emergency, call the number above

Tuesday	23rd December	All Depots Closed from 12.30pm
Wednesday	24th December	All Depots Closed
Thursday	25th December	All Depots Closed
Friday	26th December	All Depots Closed
Saturday	27th December	All Depots Closed
Sunday	28th December	All Depots Closed
Monday	29th December	All Depots Closed
Tuesday	30th December	All Depots Closed
Wednesday	31st December	All Depots Closed
Thursday	1st December	All Depots Closed
Friday	2nd January	All Depots Closed
Saturday	3rd January	All Depots Closed
Sunday	4th January	All Depots Closed
Monday	5th January 2026	All Depots Business as Usual

Our emergency telephone operates 24/7

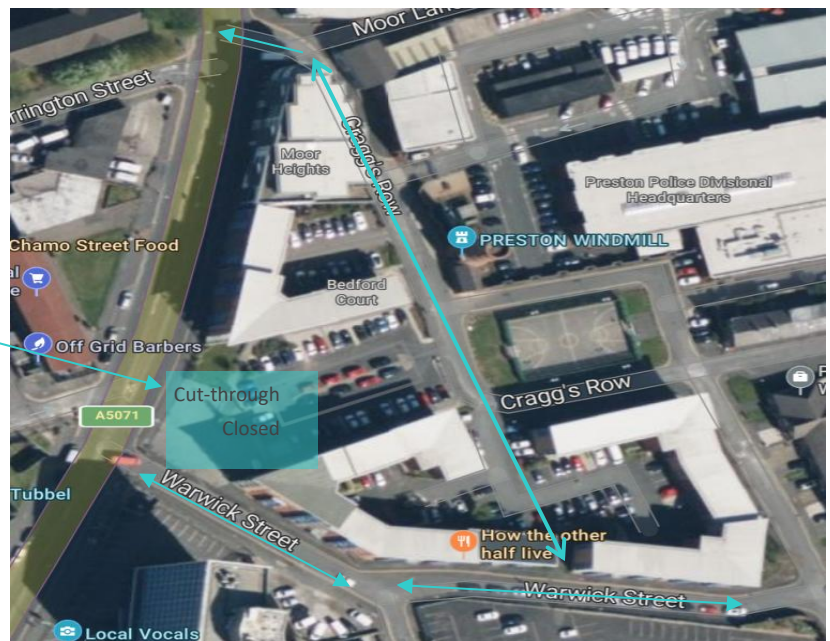
News & Updates



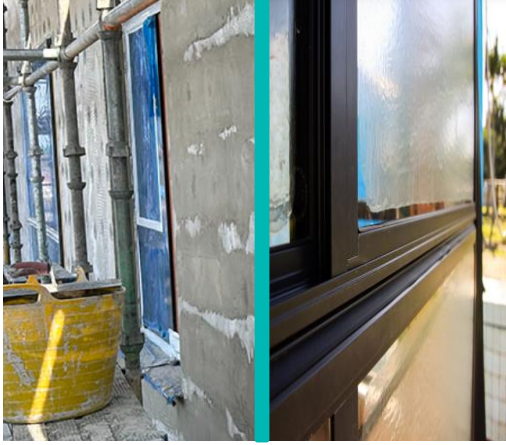
Our Welfare unit is located on the front entrance to the car park area between Bedford and Leicester Court

News & Updates

Due to the cut-through patch currently being closed, please follow the directions shown on the diagram to access the main road,



News & Updates

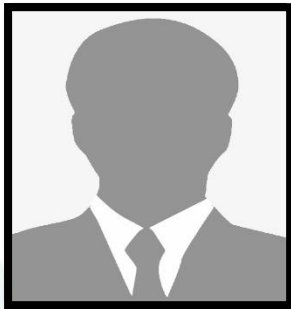


- To protect your privacy during the cladding works at your elevation, we will be applying a temporary frosted window covering to your windows while work is taking place. These coverings will still allow sunlight to come through, This will ensure that you are not overlooked by operatives working on the scaffolding. The coverings are removable and will be taken down once works in your area are complete.

We will continue to keep you updated each week as the project progresses.

Should you have any questions about the works, please do not hesitate to contact me directly.

Contact information



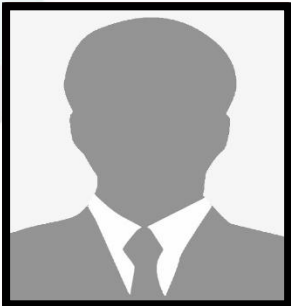
Resident Liaison Officer

Name: Courtney Greatorex

Telephone: 07939 894015

Email: CGreatorex@starfishltd.com

Working hours: 8am-5:00pm



Site Manager

Name: Daniel Horwood

Telephone: 07940 022295

Email: dhorwood@starfishltd.com

Working hours: 8am-5:00pm